

**NOW
AVAILABLE
IN BRASS**

CALBALANCE

HYDRAULIC SEPARATOR

SIMPLIFY AND PROTECT YOUR SYSTEM

In addition to isolating the primary circuit from the secondary circuit, the new 4 in 1 hydraulic separators from Calefactio separates water, air, dirt and ferrous debris. The coalescence process produced by the media allows air and micro-bubbles to fuse and then be evacuated through the automatic air vent.

Hydraulic separators are used to isolate primary circuit flow from secondary circuit flow.
Great for heating and snow melting applications with multiple temperature zones.

4 in 1 brass
hydraulic separator

New



4 in 1
hydraulic
separator



4 in 1 hydraulic
separator with
flange



Prevents variations in flow
rates and temperature

Improves system
efficiency

Separates water, air, dirt
and ferrous debris

CALBALANCE

HYDRAULIC SEPARATOR

4 IN 1 BRASS HYDRAULIC SEPARATOR

New

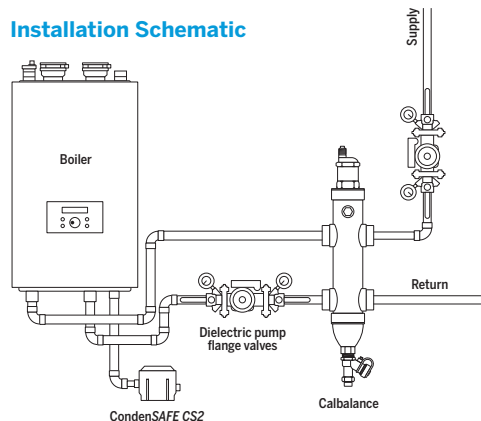
New 4 in 1 brass hydraulic separator from Calefactio separates water, air, dirt and ferrous debris. The coalescence process produced by the media allows air and micro-bubbles to fuse and then be evacuated through the Calvent automatic air vent.

Dirt particles will collide and fall at the bottom of the separator where they can be removed using the drain during service. Magnet will also facilitate the separation and accumulation of ferrous and non-ferrous debris.

TECHNICAL SPECIFICATIONS

- ▶ Made in brass
- ▶ Coalescing media
- ▶ Thermometer port 1/2" FNPT
- ▶ Maximum operating pressure: 125 PSI
- ▶ Maximum operating temperature: 110°C (225°F)
- ▶ Connection: NPT or PRESS (1" to 1 1/4")
- ▶ Adapted fluids: water and up to 50% glycol solution

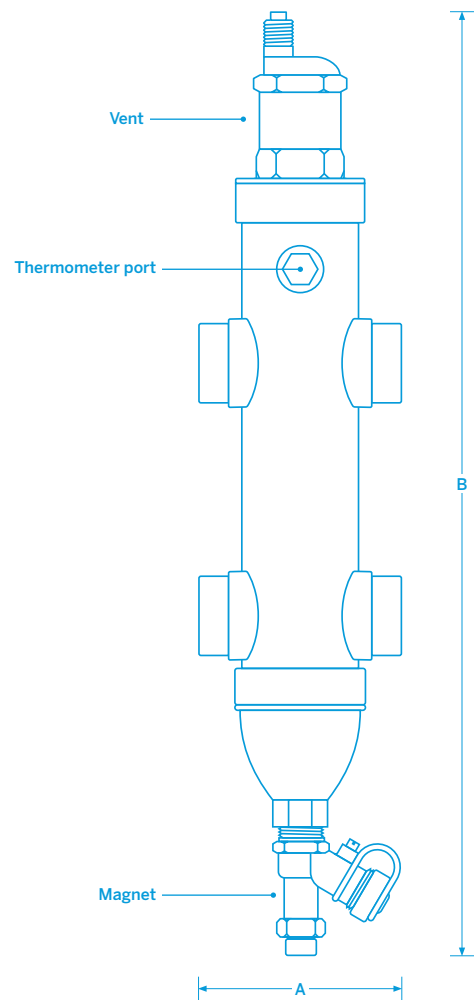
Installation Schematic



INCLUDED



Magnet



NPT

Model#	Conn.	Flow		Dimension				Weight	
				A		B			
	in	GPM	m³/h	in	mm	in	mm	lb	kg
CB100N-4BR	1	10	2.3	4.5	114	7.5	189	8.5	3.9
CB125N-4BR	1¼	16	3.6	4.5	114	7.5	189	8.5	3.9

PRESS

Model#	Conn.	Flow		Dimension				Weight	
				A		B			
	in	GPM	m³/h	in	mm	in	mm	lb	kg
CB100P-4BR	1	10	2.3	4.5	114	7.5	189	10.5	4.8
CB125P-4BR	1¼	16	3.6	4.5	114	7.5	189	10.5	4.8

CALBALANCE

HYDRAULIC SEPARATOR

4 IN 1 HYDRAULIC SEPARATOR

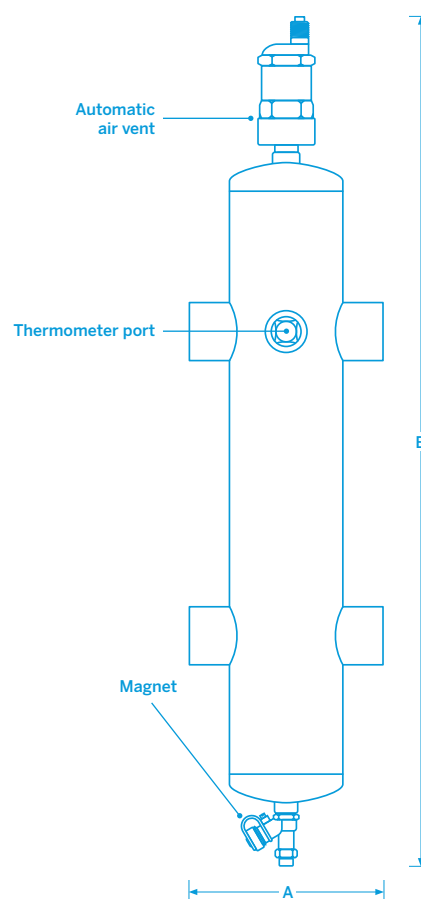
New 4 in 1 hydraulic separator from Calefactio separates water, air, dirt and ferrous debris. The coalescence process produced by the media allows air and micro-bubbles to fuse and then be evacuated through the Calvent automatic air vent. Dirt particles will collide and fall at the bottom of the separator where they can be removed using the drain during service. Magnet will also facilitate the separation and accumulation of ferrous and non-ferrous debris.

ADVANTAGES

- ▶ Prevents variations in flow rates and temperature
- ▶ Separate dirt
- ▶ Separate air
- ▶ Capture ferrous and non-ferrous debris
- ▶ Improves system efficiency
- ▶ Better energy performance
- ▶ Increases component life
- ▶ Reduces installation and operation costs
- ▶ Easy to install and maintain

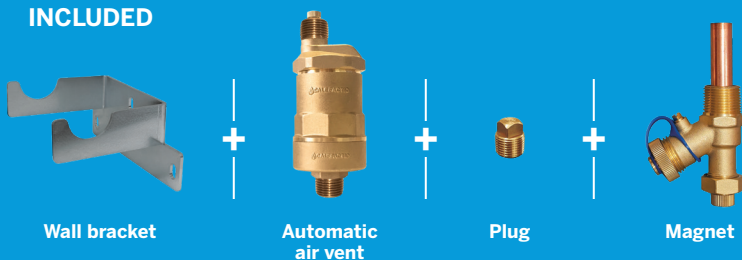
TECHNICAL SPECIFICATIONS

- ▶ Equipped with Calvent automatic air vent
- ▶ Painted steel frame
- ▶ Coalescing media
- ▶ Thermometer port
- ▶ Maximum operating pressure: 150 PSI
- ▶ Maximum operating temperature with insulation: 100°C (212°F)
- ▶ Maximum operating temperature without insulation: 132°C (270°F)
- ▶ Connection: NPT, 1" to 2"
- ▶ Adapted fluids: water and glycol solutions up to 50%
- ▶ Magnet including drain valve
- ▶ Provided with wall bracket
- ▶ Preformed insulation made of polyurethane (option)



#Model	Connect. FNPT	Flow		Dimension				Weight	
				A		B			
	in	GPM	m³/h	in	mm	in	mm	lb	kg
CB100-4	1	11	2.5	5 ½	136	26.7	677	9.5	4.3
CB125-4	1¼	18	4	6	149	28.4	722	11.9	5.4
CB150-4	1½	26	6	7	174	30.5	774	15.9	7.2
CB200-4	2	39	9	8	200	32.4	824	21.0	9.54

INCLUDED



OPTION

Preformed insulation

Available with insulation preformed in polyurethane to minimize heat loss.



CALBALANCE

HYDRAULIC SEPARATOR

4 IN 1 HYDRAULIC SEPARATOR WITH FLANGE

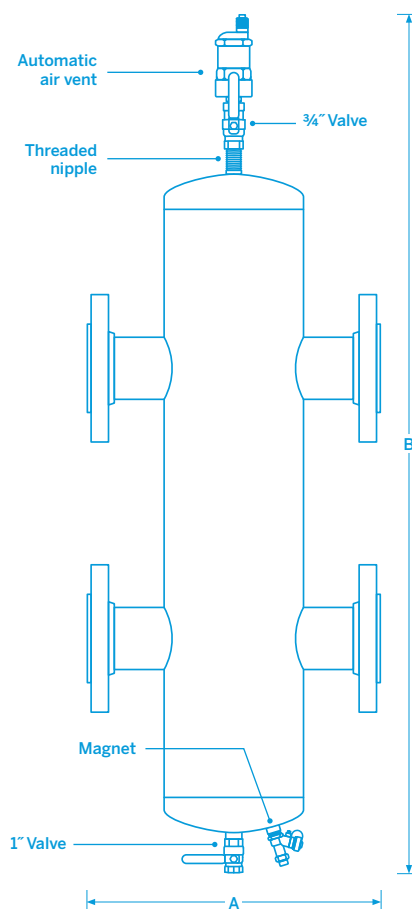
New 4 in 1 hydraulic separator from Calefactio separates water, air, dirt and ferrous debris. The coalescence process produced by the media allows air and micro-bubbles to fuse and then be evacuated through the Calvent automatic air vent. Dirt particles will collide and fall at the bottom of the separator where they can be removed using the drain during service. Magnet will also facilitate the separation and accumulation of ferrous and non-ferrous debris.

ADVANTAGES

- ▶ Prevents variations flow rates and temperature
- ▶ Separate dirt
- ▶ Separate air
- ▶ Capture ferrous and non-ferrous impurities
- ▶ Improves system efficiency
- ▶ Better energy performance
- ▶ Increases component life
- ▶ Reduces installation and operation costs
- ▶ Easy to install and maintain

TECHNICAL SPECIFICATIONS

- ▶ Equipped with Calvent automatic air vent
- ▶ Two drain valves
- ▶ Threaded nipple
- ▶ Painted steel frame
- ▶ Coalescing media
- ▶ Maximum operating pressure: 150 PSI
- ▶ Maximum operating temperature: 132°C (270°F)
- ▶ Connection: Flange, 2 1/2", 3" and 4"
- ▶ Adapted fluids: water and glycol solutions up to 50%
- ▶ Magnet including drain valve



#Model	Connect. FNPT	Flow		Dimension				Weight	
				A		B			
	in	GPM	m³/h	in	mm	in	mm	lb	kg
CB250F-4	2½	88	20	14	350	42½	1080	63	28.4
CB300F-4	3	132	30	18	467	46⅞	1180	81	36.8
CB400F-4	4	255	58	18	467	46⅞	1180	95	43.2

INCLUDED



Automatic air vent



Threaded nipple



1" Drain valve



¾" Drain valve

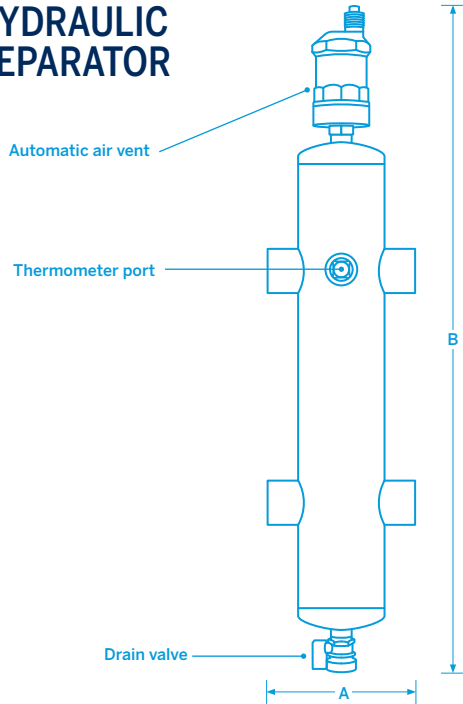


Magnet

CALBALANCE

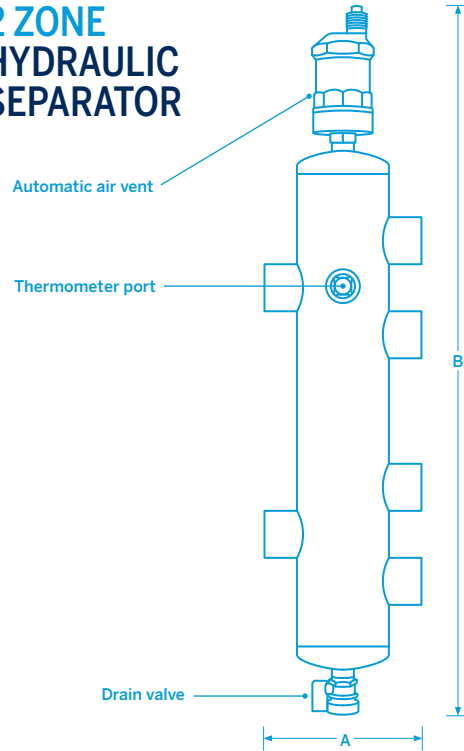
HYDRAULIC SEPARATOR

HYDRAULIC SEPARATOR



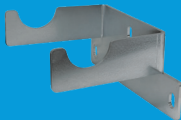
#Model	Connect. FNPT	Flow		Dimension				Weight	
				A		B			
	in	GPM	m³/h	in	mm	in	mm	lb	kg
CB100	1	11	2.5	5 ½	136	26	660	8.4	3.8
CB125	1¼	18	4	6	149	28	710	10.6	4.9
CB150	1½	26	6	7	174	30	760	14.5	6.6
CB200	2	39	9	8	200	32	810	19.8	8.9

2 ZONE HYDRAULIC SEPARATOR



#Model	Connect. FNPT	Flow		Dimension				Weight	
				A		B			
	in	GPM	m³/h	in	mm	in	mm	lb	kg
CB1002Z	1	11	2.5	3	76	25¼	653	8.8	4
CB1252Z	1¼	18	4	3½	89	27½	698	11.2	5.1

INCLUDED



Wall bracket



Automatic
air vent



Plug



Drain valve

OPTION

Preformed insulation
(1 zone only)

Magnet

