



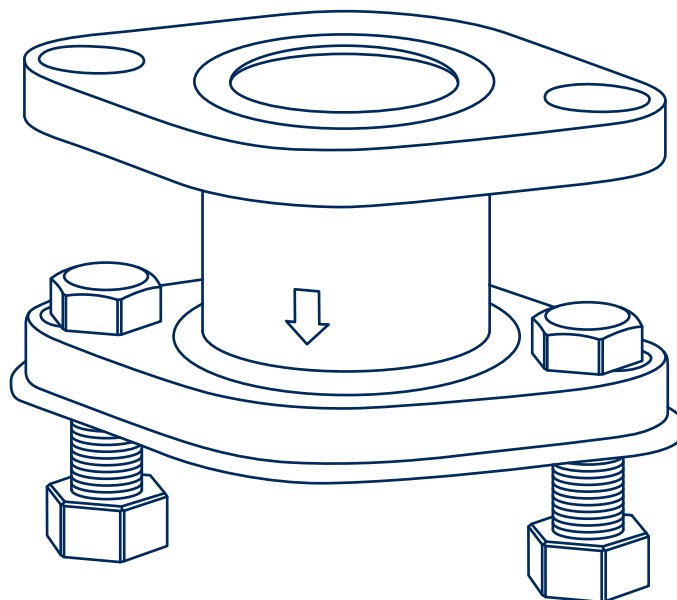
## User Manual

# DIELECTRIC DOUBLE FLANGED CHECK

### DESCRIPTION

Upgrade your pump system with our innovative dielectric double flanged check, designed to seamlessly integrate with a wide range of pumps from  $\frac{3}{4}$ " to  $1\frac{1}{2}$ ".

This flanged check are engineered to accommodate standard flange pump installations, ensuring compatibility and ease of use. Featuring slotted bolt holes, these versatile valves are perfect for both standard and high-velocity pumps, offering unparalleled flexibility in your setup.



Scan the QR code  
to view the online  
version.

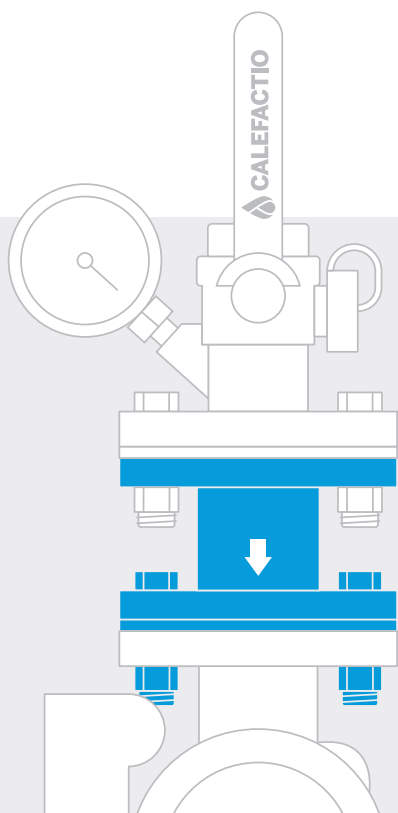
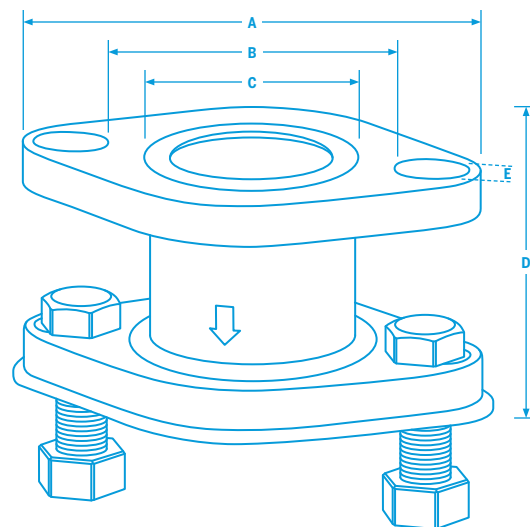


# DIELECTRIC DOUBLE FLANGED CHECK

## TECHNICAL SPECIFICATIONS

- Flange: Brass
- Bolts and nuts: Steel
- Dielectric ring: Nylon
- Body: Brass
- Check valve: POM
- Flange gasket: NBR
- For pump flange  $\frac{3}{4}$ " thru  $1\frac{1}{2}$ "
- Including 1 gasket, 2 nuts and 2 bolts

Model#	Connect.	A		B		C		D		E		Weight	
		in	cm	in	cm	in	cm	in	cm	in	cm	lb	kg
DDFC	$\frac{3}{4}$ " to $1\frac{1}{2}$ "	$4\frac{3}{16}$	10.6	$2\frac{11}{16}$	6.8	$1\frac{1}{4}$	3.2	$1\frac{3}{4}$	4.4	$\frac{3}{8}$	0.9	1.63	0.74



## INSTALLATION

- The dielectric double flanged check can be positioned either horizontally or vertically for installation.
- It's crucial to install the flanged check so that the directional arrow on its body aligns with the system's flow direction.
- The dielectric double flanged check features a rotating flange, allowing for more accurate and adaptable positioning during

Quebec, Canada  
**T** 450 951.0818  
**F** 450 951.2165

[calefactio\\_solutions](#)  
[calefactio](#)  
[calefactio-solutions-inc](#)

[calefactio.com](#)

**CALEFACTIO**
  
 Improve what's best