

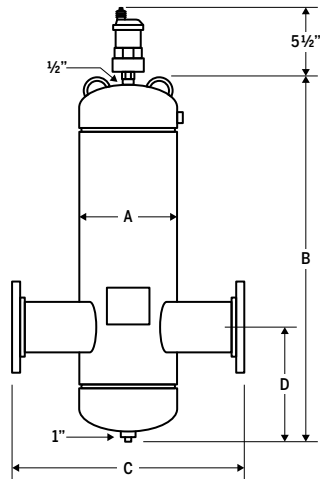
# EWVAA

- ▶ Design conforms to ASME, section VIII
- ▶ Equipped with a Calvent automatic vent (#CV050)
- ▶ Supplied with a drainage valve

## TECHNICAL SPECIFICATIONS

- ▶ Coalescent media: stainless steel
- ▶ Shell: carbonized steel
- ▶ Pressure purger valve: brass
- ▶ Maximum design temperature: 121°C (250°F)
- ▶ Maximum design pressure: 125 PSI
- ▶ Pressure of 150, 200 and 250 PSI also available

✘ To obtain a tank of higher capacity and greater pressure, communicate with the manufacturer.



Model#	Connection		Maximum flow		Dimension								Approx. weight	
	in	mm	GPM	LPM	A		B		C		D		lb	kg
EWVAA-2	2	51	69	261	4	102	18½	470	15¼	387	7	178	35	16
EWVAA-2NPT	2	51	69	261	4	102	18½	470	10¾	264	7	178	26	12
EWVAA-2.5	2½	64	108	409	5	127	18½	470	15¼	400	7	178	61	28
EWVAA-2.5NPT	2½	64	108	409	5	127	18½	470	11	279	7	178	38	17
EWVAA-3	3	76	144	545	6	152	23	584	20¼	514	8½	216	71	32
EWVAA-3NPT	3	76	144	545	6	152	23	584	12½	318	8½	216	56	25
EWVAA-4	4	102	255	965	8	203	23	584	20½	524	8½	216	105	48
EWVAA-5	5	127	398	1507	10	254	31	787	27¼	705	11½	292	92	42
EWVAA-6	6	152	570	2158	12	305	31	787	27¼	705	11½	292	129	59
EWVAA-8	8	203	945	3577	16	406	36	914	33¾	854	11½	292	225	102
EWVAA-10	10	254	1440	5451	20	508	46	1168	37½	953	13½	343	375	170
EWVAA-12	12	305	2100	7949	24	610	54	1372	42½	1080	16	406	564	256

QUANTITY: \_\_\_\_\_ MODEL: EWVAA-\_\_\_\_\_

MAXIMUM PRESSURE:  250 PSI / 17 bar  200 PSI / 13 bar  150 PSI / 10 bar  Other\*: \_\_\_\_\_

Notes: \_\_\_\_\_

Project: \_\_\_\_\_ Representative: \_\_\_\_\_

Location: \_\_\_\_\_ Date submitted: \_\_\_\_\_

Engineer: \_\_\_\_\_ Approved by: \_\_\_\_\_

Contractor: \_\_\_\_\_ Date of approval: \_\_\_\_\_

\*Subject to the manufacturer's approval.

**SPECIFICATIONS:** Furnish and install as shown on the plans and described herein, a EWVAA air and dirt separator as manufactured by Calefactio. Each separator must be designed with a pressure purger, drain valve, and automatic air vent. The separator must also be equipped with a stainless steel coalescing medium to facilitate the separation of air and dirt in the system entrained water. The separator must be constructed in accordance with the latest revision of the ASME Boiler and Pressure Vessel Code and stamped \_\_\_\_\_ psi working pressure and a 121°C (250°F) maximum operating temperature. Each separator shall be Calefactio model EWVAA-\_\_\_\_\_ or approved equal.