

## Submittal Data



# DIELECTRIC PUMP FLANGE VALVE NPT WITH NO DRAIN

Job Name: \_\_\_\_\_  
 Location: \_\_\_\_\_  
 Engineer: \_\_\_\_\_  
 Contractor: \_\_\_\_\_  
 Sales Rep.: \_\_\_\_\_

Submitted by: \_\_\_\_\_ Date: \_\_\_\_\_  
 Approved by: \_\_\_\_\_ Date: \_\_\_\_\_  
 Order No.: \_\_\_\_\_ Date: \_\_\_\_\_  
 Notes: \_\_\_\_\_

### DESCRIPTION

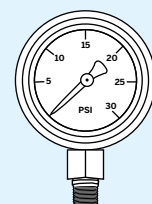
- ▶ Full port brass ball valve
- ▶ Ball valve isolation for circulating pumps
- ▶ Dielectric rotating flange
- ▶ 2 gauge ports
- ▶ 500 CWP (Cold Working Pressure)

### INCLUDED

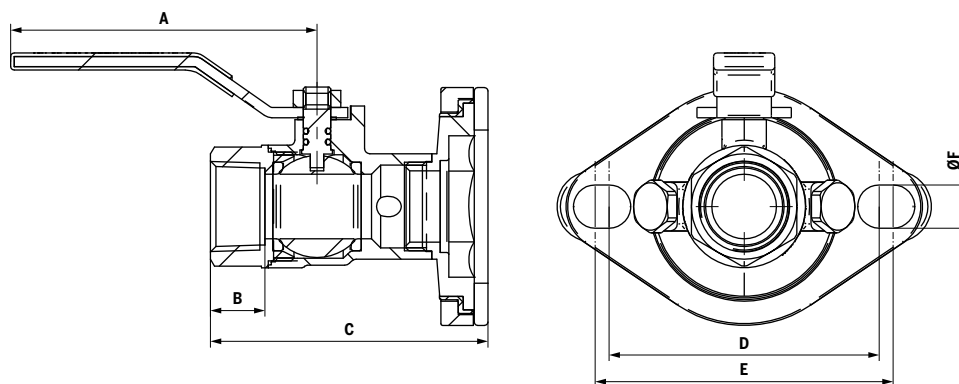
- ▶ 1 gasket
- ▶ 2 nuts and 2 bolts

### OPTIONAL

- ▶ 1/8" MNPT Pressure gauge  
0-30 PSI  
(#GAGE0-30BOTTOM)
- ▶ 1/8" MNPT Pressure gauge  
0-100 PSI  
(#GAGE0-100BOTTOM)



Model#	Size	A		B		C		D		E		F		Weight	
		in	mm	in	mm	in	mm	in	mm	in	mm	in	mm	lb	kg
PF034N-ND	3/4"	3 1/2	90	5/8	16	3 1/8	79	3 1/8	79	3 1/2	88	1/2	13	1.6	0.7
PF100N-ND	1"	4	100	3/4	19	3 1/2	90	3 1/8	79	3 1/2	88	1/2	13	2.1	0.9
PF114N-ND	1 1/4"	5 1/2	140	3/4	19	3 7/8	99	3 1/8	79	3 1/2	88	1/2	13	2.7	1.2
PF112N-ND	1 1/2"	5 1/2	140	3/4	19	4 1/8	105	3 1/8	79	3 1/2	88	1/2	13	3.2	1.4



### TYPICAL SPECIFICATIONS

Designed for residential, commercial, or industrial use with water or a glycol mixture. This Calefactio dielectric pump flange valve is activated by a blowout proof stem. The rotating flange features a dielectric isolation. Multi-directional main valve allows for draining from either side of the pump. Do not silver braze or overheat valves when soldering, high temperature may damage the seat material.