

## Submittal Data



# ASME COALESCING AIR AND DIRT SEPARATORS EWVA SERIES

Job Name: \_\_\_\_\_  
 Location: \_\_\_\_\_  
 Engineer: \_\_\_\_\_  
 Contractor: \_\_\_\_\_  
 Sales Rep.: \_\_\_\_\_

Submitted by: \_\_\_\_\_ Date: \_\_\_\_\_  
 Approved by: \_\_\_\_\_ Date: \_\_\_\_\_  
 Order No.: \_\_\_\_\_ Date: \_\_\_\_\_  
 Notes: \_\_\_\_\_

### QUANTITY

### MODEL

To obtain a separator of higher capacity and greater pressure, contact the manufacturer.

### ✓ Replaceable media



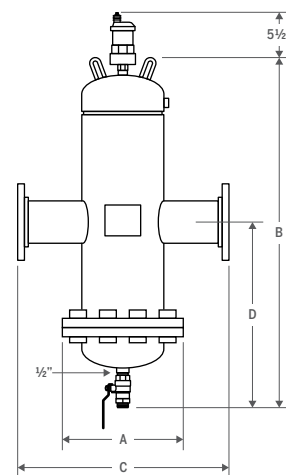
### FEATURES

- ▶ Design conforms to ASME, section VIII
- ▶ The media can be removed for maintenance or replacement
- ▶ Equipped with Calvent automatic vent (#CV050)
- ▶ Supplied with a drain valve

### TECHNICAL SPECIFICATIONS

- ▶ Coalescent media: stainless steel
- ▶ Shell: steel
- ▶ Pressure purger valve : bronze
- ▶ Exterior finish in painted primer
- ▶ Maximum design temperature: 121°C (250°F)
- ▶ Maximum design pressure: 125 PSI
- ▶ Pressure of 150, 175, 200, 250 and 300 PSI also available

Model#	Connection		Flow		Dimension								Weight	
					A		B		C		D			
	in	mm	GPM	LPM	in	mm	in	mm	in	mm	in	mm	lb	kg
EWVA-2	2	51	69	261	9	229	23	584	15 ¼	387	11½	292	100	45
EWVA-2 NPT	2	51	69	261	9	229	23	584	9	227	11½	292	90	41
EWVA-2.5	2 ½	64	108	409	10	254	23	584	15 ¼	400	11½	292	125	57
EWVA-2.5 NPT	2 ½	64	108	409	10	254	23	584	10 ½	267	11½	292	115	52
EWVA-3	3	76	144	545	11	279	29	737	20 ¼	514	14½	368	150	68
EWVA-3 NPT	3	76	144	545	11	279	29	737	12 ½	318	14½	368	130	59
EWVA-4	4	102	255	965	13 ½	343	29	737	20 ¾	524	14½	368	250	113
EWVA-5	5	127	398	1507	16	406	39	991	27 ¾	705	19½	495	310	141
EWVA-6	6	152	570	2158	19	483	39	991	27 ¾	705	19½	495	375	170
EWVA-8	8	203	945	3577	23 ½	597	49	1245	35 ¾	905	24½	622	700	318
EWVA-10	10	254	1440	5451	27 ½	699	65	1651	37 ½	953	32½	826	1000	454
EWVA-12	12	305	2100	7949	32	813	76	1930	42 ½	1080	38	965	1500	680



### TYPICAL SPECIFICATIONS

Furnish and install as shown on the plans and described herein, an EWVA air and dirt separator as manufactured by Calefactio. Each separator must be designed with a blowdown valve, skim valve, and automatic air vent. The separator must also utilize in its design a stainless steel coalescing medium to facilitate the separation of air and dirt in the system entrained water. The separator must be constructed in accordance with the latest revision of the ASME Boiler and Pressure Vessel Code and stamped 125 PSI working pressure. Each separator shall be Calefactio model EWVA-\_\_\_\_\_ or approved equal.