

SUBMITTAL DATA



COALESCING AIR AND DIRT SEPARATORS EWVA



Job Name: _____
 Location: _____
 Engineer: _____
 Contractor: _____
 Sales Rep.: _____

Submitted by: _____ Date: _____
 Approved by: _____ Date: _____
 Order No.: _____ Date: _____
 Notes: _____

✓ Replaceable media

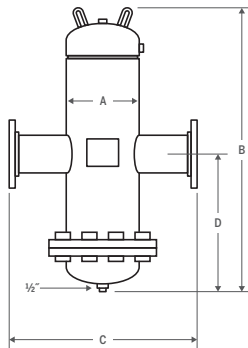
Features

- ▶ Design conforms to ASME, section VIII
- ▶ The media can be removed for maintenance or replacement

Technical Specifications

- ▶ Coalescent media: stainless steel
- ▶ Carbonized steel housing
- ▶ Exterior finish in painted primer
- ▶ Maximum design temperature: 121°C (250°F)
- ▶ Maximum design pressure: 150 PSI
- ▶ Pressure of 175, 200, 250 and 300 PSI also available

To obtain a separator of higher capacity and greater pressure, contact the manufacturer.



QUANTITY

MODEL

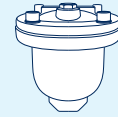
MAXIMUM PRESSURE

- ☐ 150 PSI ☐ 175 PSI
☐ 200 PSI ☐ 250 PSI
☐ 300 PSI
☐ Other*:

*Subject to the manufacturer's approval.

OPTIONAL

- ☐ Industrial vent (#MV15)



Model#	Connection		Maximum Flow		Dimension								Weight	
					A		B		C		D			
	in	mm	GPM	LPM	in	mm	in	mm	in	mm	in	mm	lb	kg
EWVA2	2	51	69	261	4	102	23	584	15¼	387	11½	292	100	45
EWVA2-NPT	2	51	69	261	4	102	23	584	9	227	11½	292	90	41
EWVA2.5	2½	64	108	409	5	127	23	584	15¾	400	11½	292	125	57
EWVA2.5-NPT	2½	64	108	409	5	127	23	584	10½	267	11½	292	115	52
EWVA3	3	76	144	545	6	152	29	737	20¼	514	14½	368	150	68
EWVA3-NPT	3	76	144	545	6	152	29	737	12½	318	14½	368	130	59
EWVA4	4	102	255	965	8	203	29	737	20⅝	524	14¾	368	250	113
EWVA5	5	127	398	1507	10	254	39	991	27¾	705	19½	495	310	141
EWVA6	6	152	570	2158	12	305	39	991	27¾	705	19½	495	375	170
EWVA8	8	203	945	3577	16	406	49	1245	35⅝	905	24¾	622	700	318
EWVA10	10	254	1440	5451	20	508	65	1651	37½	953	32¾	826	1000	454
EWVA12	12	305	2100	7949	24	610	76	1930	42½	1080	38	965	1500	680

005-2025-12

TYPICAL SPECIFICATIONS

Furnish and install, as shown on the plans, a Calefactio EWVA-_____ coalescing air and dirt separator, sized for a flow rate of _____ GPM and provided with _____-inch tangential connections. The separator shall include a stainless-steel coalescing media to enhance the removal of entrained air and dirt from the system fluid. The vessel shall be constructed in accordance with the latest edition and addenda of ASME Section VIII, Division 1, and stamped for a working pressure of _____ PSI at 250°F. Each air separator shall be a Calefactio unit, model EWVA-_____, or an approved equal.

Quebec, Canada
 T 450 951.0818
 F 450 951.2165

calefactio_solutions
 calefactio
 calefactio-solutions-inc

calefactio.com